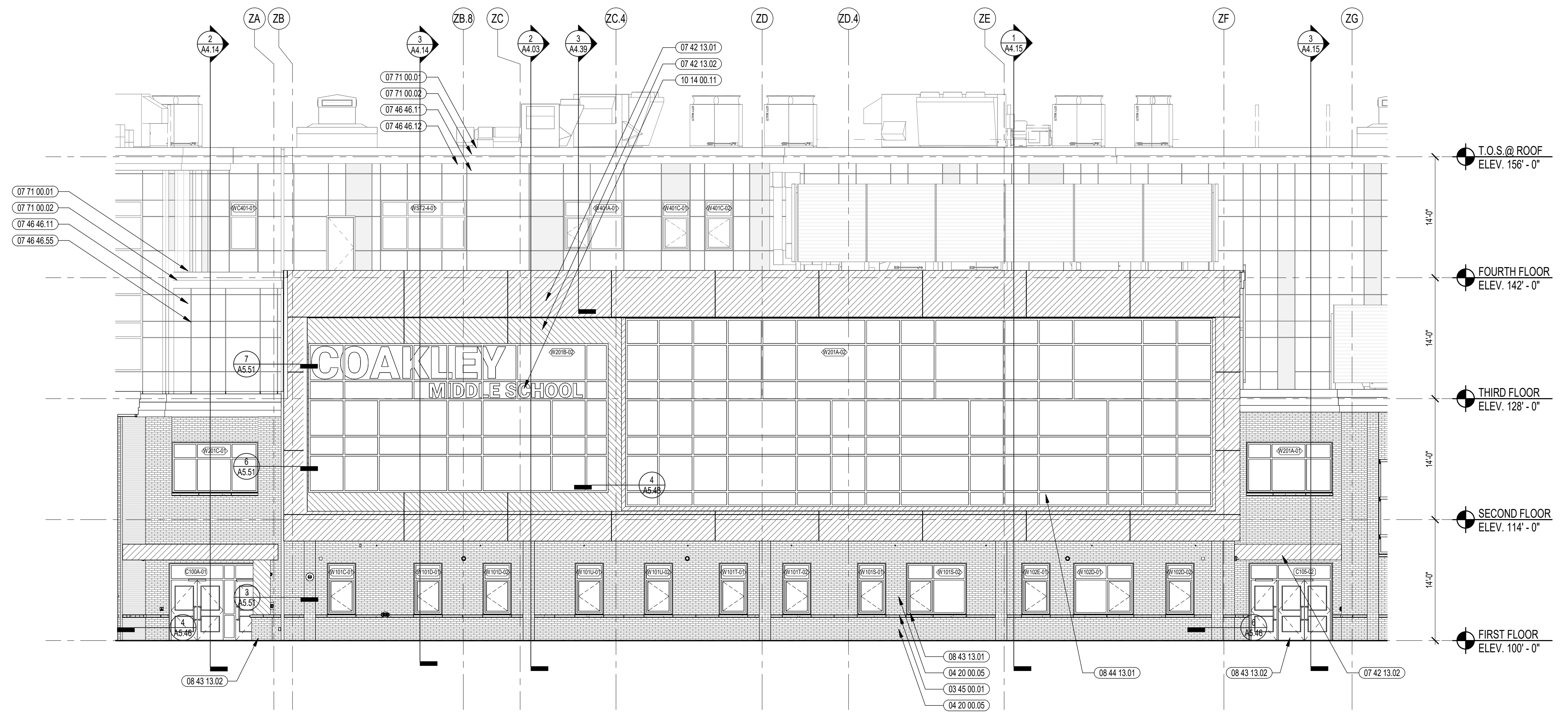
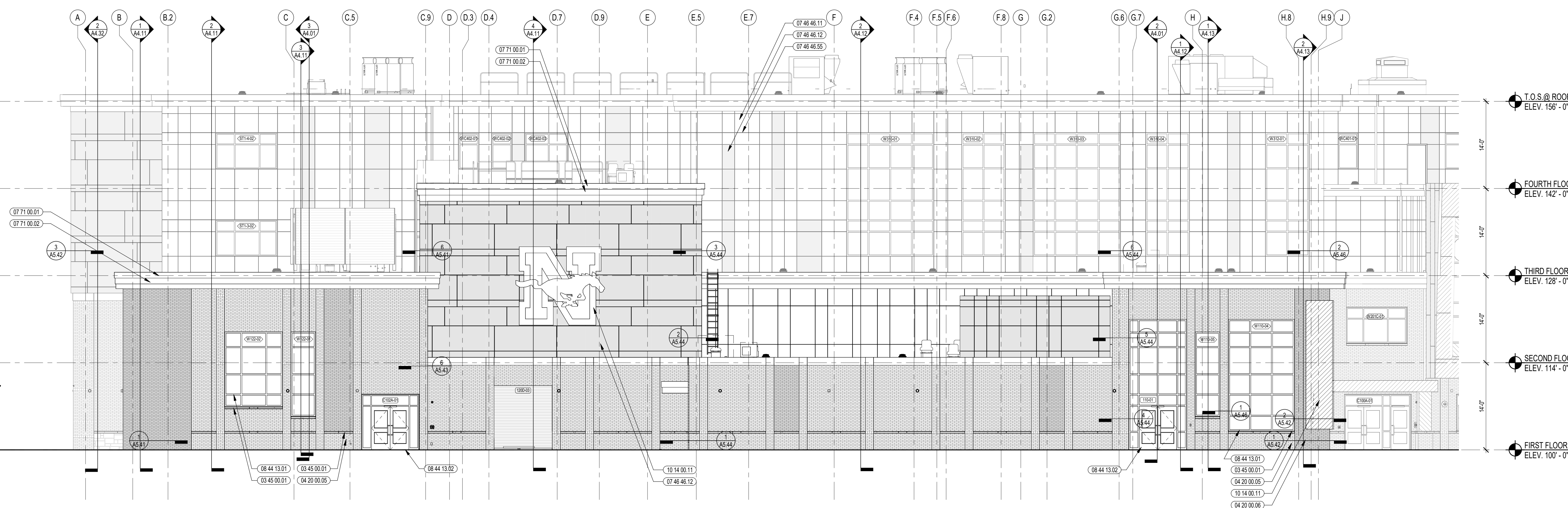


3 OVERALL SOUTH ELEVATION
1/8" = 1'-0"



2 PARTIAL SOUTH ELEVATION
1/8" = 1'-0"



1 PARTIAL SOUTH ELEVATION
1/8" = 1'-0"

PHILIP O. COAKLEY MIDDLE SCHOOL
1315 WASHINGTON STREET
NORWOOD, MA 02062

KEYNOTE LEGEND:

03 45 00 01	ARCHITECTURAL PRECAST CONCRETE UNIT
04 20 00 05	FACE BRICK - TYPE 1
04 20 00 06	FACE BRICK - TYPE 2
07 42 13 01	ALUMINUM COMPOSITE PANEL - COLOR 1
07 42 13 02	ALUMINUM COMPOSITE PANEL - COLOR 2
07 46 46 11	MINERAL FIBER CEMENT PANEL - COLOR 1
07 46 46 12	MINERAL FIBER CEMENT PANEL - COLOR 2
07 46 46 55	BEAD REVEAL TRIM
07 71 00 01	FACTORY FABRICATED FASCIA TRIM/ROOF EDGE - CUSTOM COLOR
07 71 00 02	EXPOSED ALUMINUM FINISH METAL - CUSTOM COLOR
08 43 13 01	ALUMINUM STOREFRONT FRAME
08 43 13 02	ALUMINUM ENTRANCE DOOR
08 44 13 01	ALUMINUM CURTAIN WALL FRAME
08 44 13 02	ALUMINUM ENTRANCE DOOR
10 14 00 11	EXTERIOR SIGNAGE - TYPE AS SCHEDULED

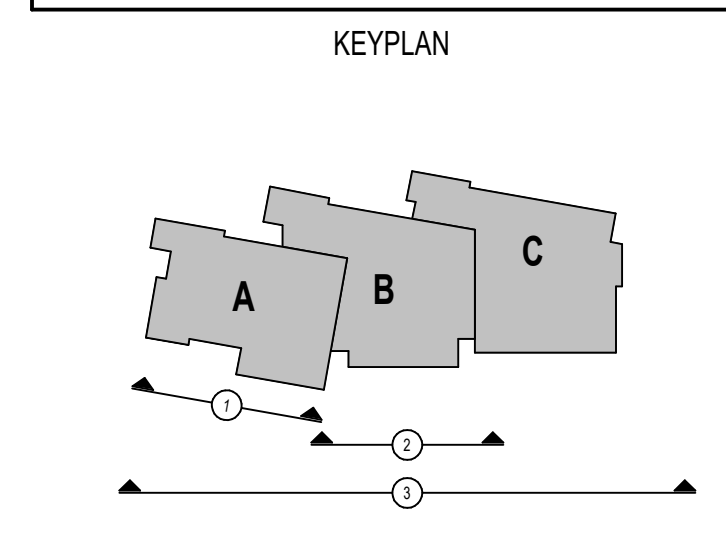
LEGEND

METAL PANEL - COLOR 1	[Pattern]
METAL PANEL - COLOR 2	[Pattern]
FACE BRICK - COLOR 1	[Pattern]
FACE BRICK - COLOR 2	[Pattern]
SPLIT FACE CMU TYPE 1	[Pattern]
FIBER CEMENT PANEL COLOR 1	[Pattern]
FIBER CEMENT PANEL COLOR 2	[Pattern]

- GENERAL NOTES:**
- REFER TO SHEET A5.01 FOR TYPICAL HORIZONTAL BOND BREAK IN VENEER BETWEEN CHANGES IN VENEER MATERIALS.
 - REFER TO SHEET A5.31 FOR ADDITIONAL FIBER CEMENT PANEL INFORMATION AND DETAILS.
 - COORDINATE EXACT LOCATION OF SPEAKERS, CAMERAS, AND LIGHTING WITH ARCHITECT PRIOR TO INSTALLATION.
 - REFER TO CIVIL DRAWINGS FOR FINISH GRADE ELEVATIONS.
 - REFER TO A3.25 FOR PRECAST TYPES.
 - REFER TO A3.25 FOR SUNSHADE TYPES.
 - FIRST FLOOR ELEVATION = 100' - 0" FINISH FLOOR ELEVATION OF 100' - 0" CORRESPONDS TO ELEVATION 98.50 ON THE CIVIL DRAWINGS

90% CONSTRUCTION DOCUMENTS

KEY PLAN NORTH ARROW



DRAWING NAME:
EXTERIOR ELEVATIONS

DRAWN BY: NGA / NSL
REVIEWED BY: NSL / JPT

SCALE: AS INDICATED | DRAWING NUMBER:
JOB NO.: 2002.00
DATE: JANUARY 27, 2023 **A3.01**

Copyright © 2023, AI3 Architects, LLC

KEYNOTE LEGEND:

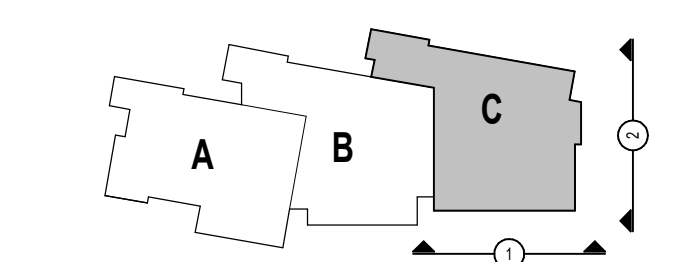
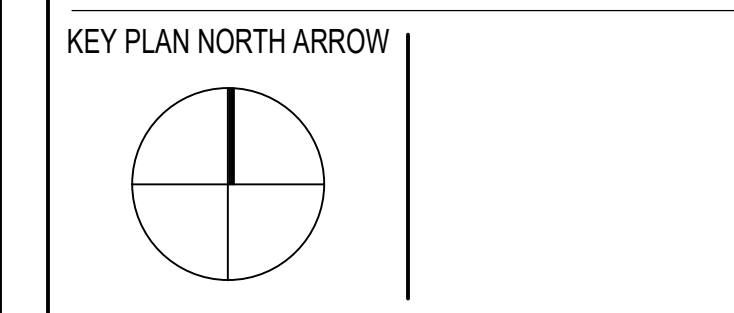
03 45 00.01	ARCHITECTURAL PRECAST CONCRETE UNIT
04 20 00.05	FACE BRICK - TYPE 1
04 20 00.06	FACE BRICK - TYPE 2
04 20 00.10	CMU BASE - SPLIT FACE CMU - REFERENCE DETAILS FOR TYPE AND DEPTH
05 20 00.29	PVC TRIM - SIZE AS NOTED
07 42 13.01	ALUMINUM COMPOSITE PANEL - COLOR 1
07 46 46.11	MINERAL FIBER CEMENT PANEL - COLOR 1
07 46 46.12	MINERAL FIBER CEMENT PANEL - COLOR 2
07 46 46.55	BEAD REVEAL TRIM
07 46 46.62	MINERAL FIBER CEMENT TRIM BOARD - 5/4 THICK - SIZE AS NOTED
07 71 00.01	FABRICATED FASCIA TRIM/ROOF EDGE - CUSTOM COLOR
07 71 00.02	EXPOSED ALUMINUM FINISH METAL - CUSTOM COLOR
08 44 13.01	ALUMINUM STOREFRONT FRAME
08 44 13.02	ALUMINUM ENTRANCE DOOR
08 92 00.01	LOWERED EQUIPMENT ENCLOSURE
10 14 00.11	EXTERIOR SIGNAGE - TYPE AS SCHEDULED

LEGEND

METAL PANEL - COLOR 1	[Pattern]
METAL PANEL - COLOR 2	[Pattern]
FACE BRICK - COLOR 1	[Pattern]
FACE BRICK - COLOR 2	[Pattern]
SPLIT FACE CMU TYPE 1	[Pattern]
FIBER CEMENT PANEL COLOR 1	[Pattern]
FIBER CEMENT PANEL COLOR 2	[Pattern]

- GENERAL NOTES:**
- REFER TO SHEET A3.01 FOR TYPICAL HORIZONTAL BOND BREAK IN VENEER BETWEEN CHANGES IN VENEER MATERIALS.
 - REFER TO SHEET A3.31 FOR ADDITIONAL FIBER CEMENT PANEL INFORMATION AND DETAILS.
 - COORDINATE EXACT LOCATION OF SPEAKERS, CAMERAS, AND LIGHTING WITH ARCHITECT PRIOR TO INSTALLATION.
 - REFER TO CIVIL DRAWINGS FOR FINISH GRADE ELEVATIONS.
 - REFER TO A3.25 FOR PRECAST TYPES.
 - REFER TO A3.25 FOR SUNSHADE TYPES.
 - FIRST FLOOR ELEVATION = 100' - 0" FINISH FLOOR ELEVATION OF 107' - 0" CORRESPONDS TO ELEVATION 96.50 ON THE CIVIL DRAWINGS

90% CONSTRUCTION DOCUMENTS



DRAWING NAME:

EXTERIOR ELEVATIONS

DRAWN BY: NGA / NSL

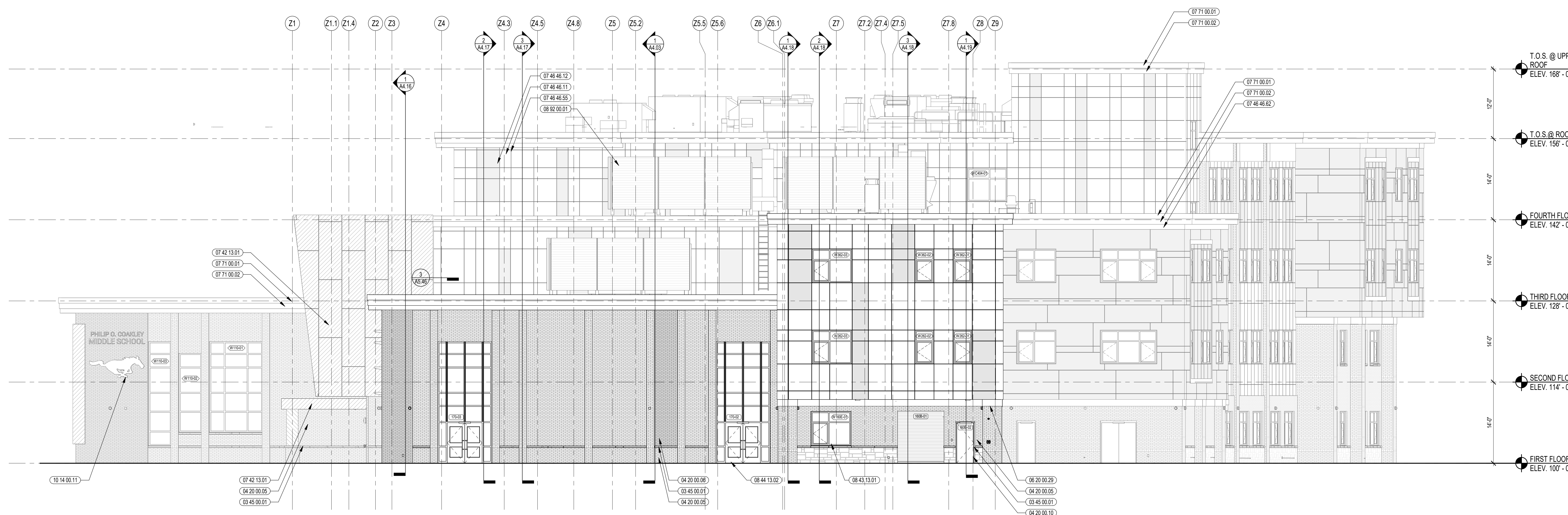
REVIEWED BY: NSL / JPT

SCALE: AS INDICATED | DRAWING NUMBER:

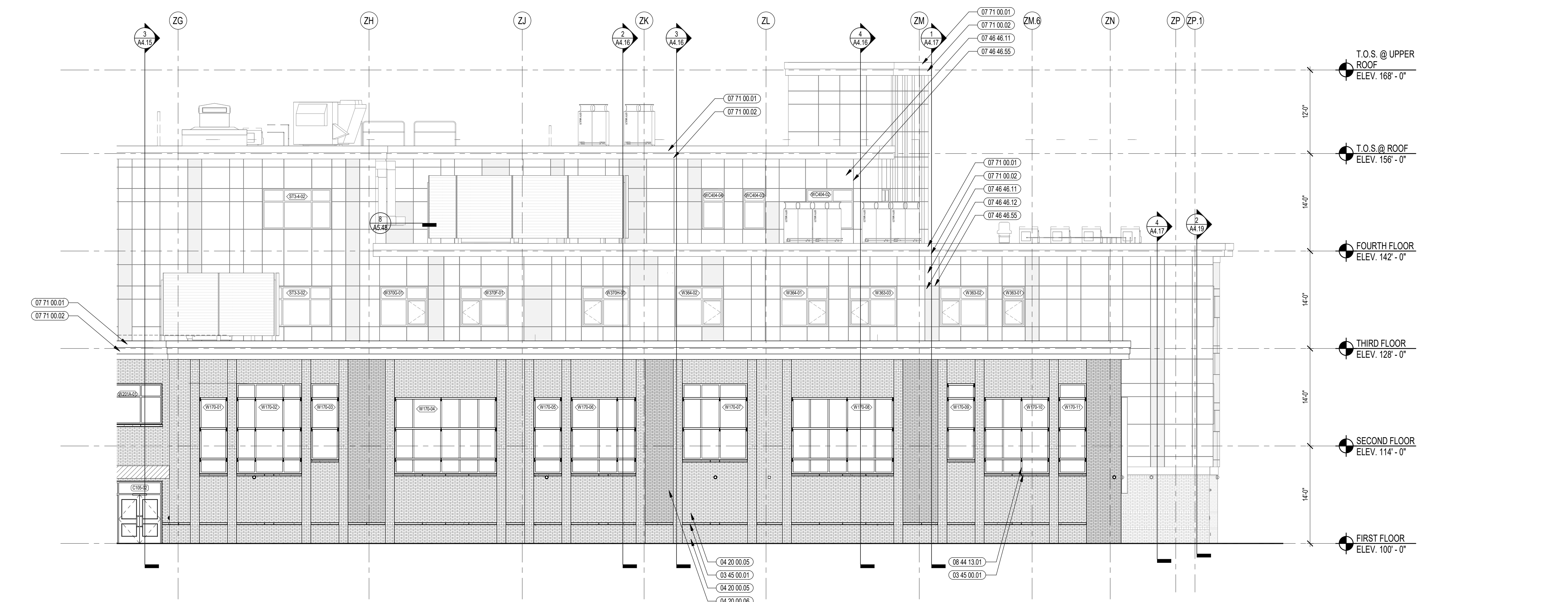
JOB NO.: 2002.00

DATE: JANUARY 27, 2023

A3.02



2 EAST ELEVATION
1/8" = 1'-0"



1 PARTIAL SOUTH ELEVATION
1/8" = 1'-0"



PHILIP O. COAKLEY MIDDLE SCHOOL
1315 WASHINGTON STREET
NORWOOD, MA 02062

KEYNOTE LEGEND:

03 45 00.01	ARCHITECTURAL PRECAST CONCRETE UNIT
04 20 00.05	FACE BRICK - TYPE 1
04 20 00.10	CMU BASE - SPLIT FACE CMU - REFERENCE DETAILS FOR TYPE AND DEPTH
06 20 00.29	PVC TRIM - SIZE AS NOTED
07 46 46.11	MINERAL FIBER CEMENT PANEL - COLOR 1
07 46 46.12	MINERAL FIBER CEMENT PANEL - COLOR 2
07 46 46.13	MINERAL FIBER CEMENT PANEL - COLOR 3
07 46 46.62	MINERAL FIBER CEMENT TRIM BOARD - 5/4 THICK - SIZE AS NOTED
07 71 00.01	FACTORY FABRICATED FASCIA TRIM/ROOF EDGE - CUSTOM COLOR
07 71 00.02	EXPOSED ALUMINUM FINISH METAL - CUSTOM COLOR
08 43 13.01	ALUMINUM STOREFRONT FRAME
08 43 13.02	ALUMINUM ENTRANCE DOOR

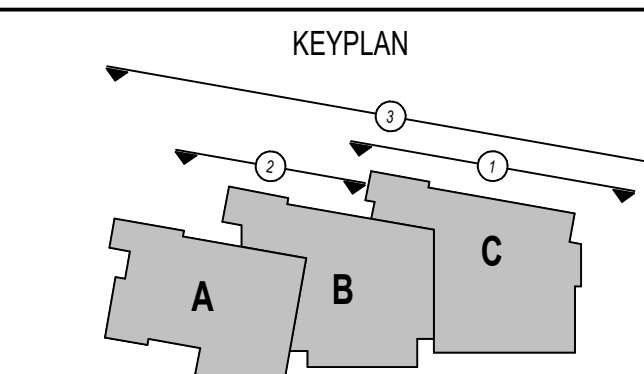
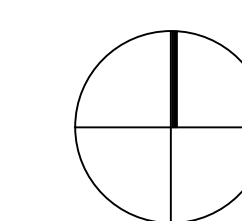
LEGEND

METAL PANEL - COLOR 1	[Pattern]
METAL PANEL - COLOR 2	[Pattern]
FACE BRICK - COLOR 1	[Pattern]
FACE BRICK - COLOR 2	[Pattern]
SPLIT FACE CMU TYPE 1	[Pattern]
FIBER CEMENT PANEL COLOR 1	[Pattern]
FIBER CEMENT PANEL COLOR 2	[Pattern]

- GENERAL NOTES:**
- REFER TO SHEET A3.01 FOR TYPICAL HORIZONTAL BOND BREAK IN VENEER BETWEEN CHANGES IN VENEER MATERIALS.
 - REFER TO SHEET A3.31 FOR ADDITIONAL FIBER CEMENT PANEL INFORMATION AND DETAILS.
 - COORDINATE EXACT LOCATION OF SPEAKERS, CAMERAS, AND LIGHTING WITH ARCHITECT PRIOR TO INSTALLATION.
 - REFER TO CIVIL DRAWINGS FOR FINISH GRADE ELEVATIONS.
 - REFER TO A3.25 FOR PRECAST TYPES.
 - REFER TO A3.25 FOR SUNSHADE TYPES.
 - FIRST FLOOR ELEVATION = 100'-0" FINISH FLOOR ELEVATION OF 100'-0" CORRESPONDS TO ELEVATION 98.50 ON THE CIVIL DRAWINGS

90% CONSTRUCTION DOCUMENTS

KEY PLAN NORTH ARROW



DRAWING NAME:

EXTERIOR ELEVATIONS

DRAWN BY: NGA / NSL

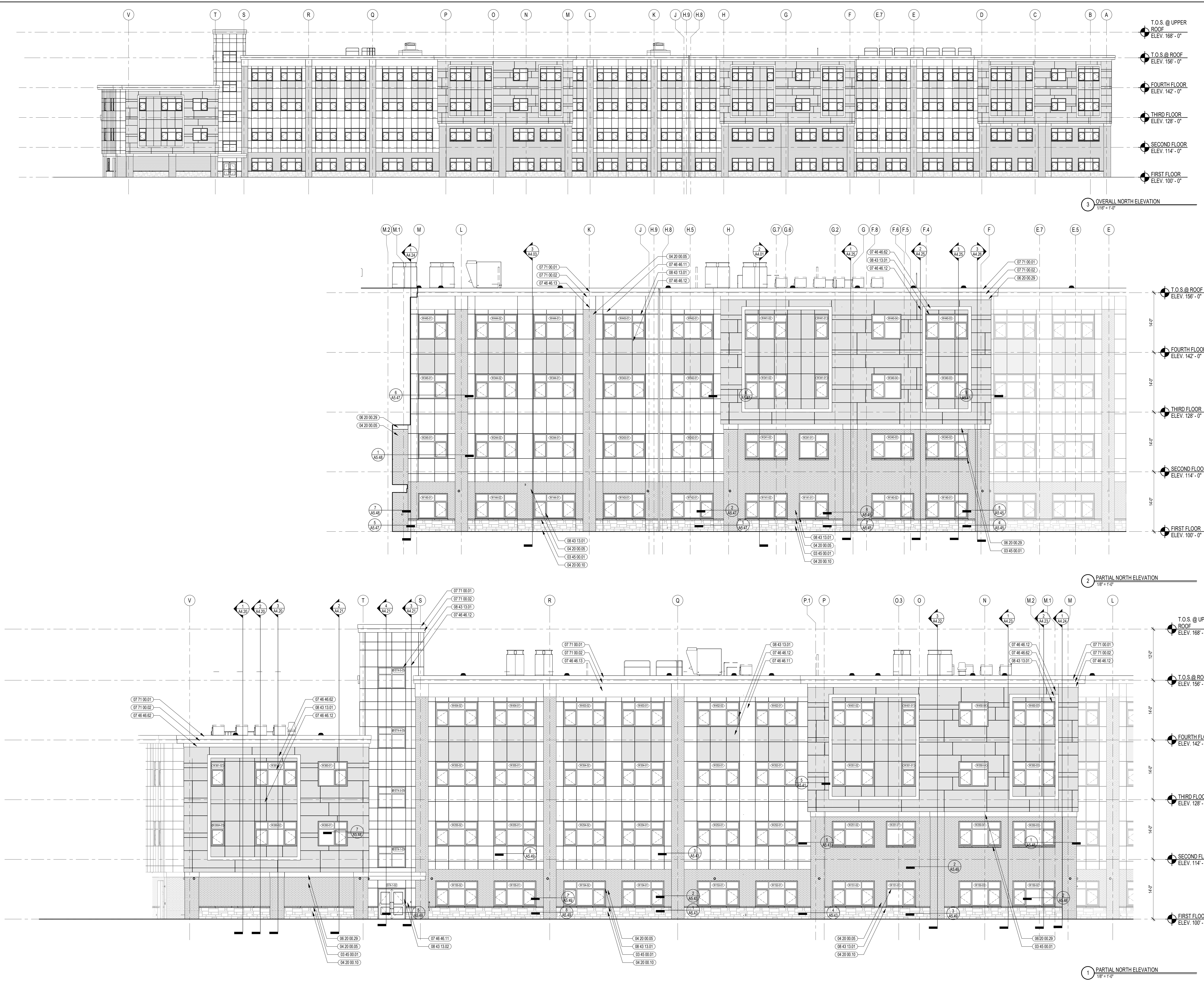
REVIEWED BY: NSL / JPT

SCALE: AS INDICATED | DRAWING NUMBER:

JOB NO.: 2002.00

DATE: JANUARY 27, 2023

A3.03





PHILIP O. COAKLEY MIDDLE SCHOOL
1315 WASHINGTON STREET
NORWOOD, MA 02062

Copyright © 2023, AI3 Architects, LLC

KEYNOTE LEGEND:

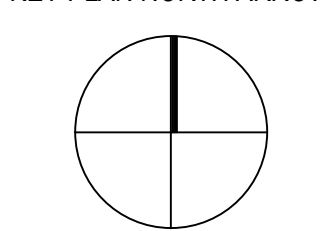
- 03 45 00.01 ARCHITECTURAL PRECAST CONCRETE UNIT
- 04 20 00.01 FACE BRICK - REFERENCE ELEVATIONS FOR TYPE AND COURSING
- 04 20 00.05 FACE BRICK - TYPE 1
- 04 20 00.06 FACE BRICK - TYPE 2
- 04 20 00.10 CMU BASE - SPLIT FACE CMU - REFERENCE DETAILS FOR TYPE AND DEPTH
- 06 20 00.29 PVC TRIM - SIZE AS NOTED
- 07 46 46.11 MINERAL FIBER CEMENT PANEL - COLOR 1
- 07 46 46.12 MINERAL FIBER CEMENT PANEL - COLOR 2
- 07 46 46.13 MINERAL FIBER CEMENT PANEL - COLOR 3
- 07 46 46.82 MINERAL FIBER CEMENT TRIM BOARD - 5/4 THICK - SIZE AS NOTED
- 07 71 00.01 FACTORY FABRICATED FASCIA TRIMROOF EDGE - CUSTOM COLOR
- 07 71 00.02 EXPOSED ALUMINUM FINISH METAL - CUSTOM COLOR
- 08 43 13.01 ALUMINUM STOREFRONT FRAME
- 08 43 13.02 ALUMINUM ENTRANCE DOOR
- 08 44 13.01 ALUMINUM CURTAIN WALL FRAME
- 08 44 13.02 ALUMINUM ENTRANCE DOOR
- 08 92 00.01 LOUVERED EQUIPMENT ENCLOSURE

LEGEND	
METAL PANEL - COLOR 1	
METAL PANEL - COLOR 2	
FACE BRICK - COLOR 1	
FACE BRICK - COLOR 2	
SPLIT FACE CMU TYPE 1	
FIBER CEMENT PANEL COLOR 1	
FIBER CEMENT PANEL COLOR 2	

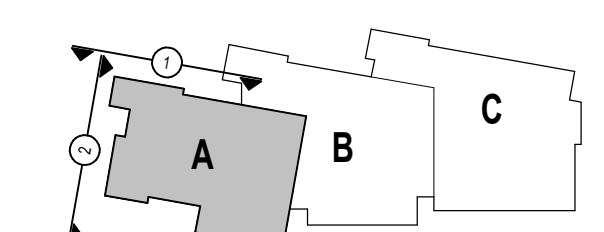
- GENERAL NOTES:**
1. REFER TO SHEET A3.01 FOR TYPICAL HORIZONTAL BOND BREAK IN VENEER BETWEEN CHANGES IN VENEER MATERIALS.
 2. REFER TO SHEET A3.31 FOR ADDITIONAL FIBER CEMENT PANEL INFORMATION AND DETAILS.
 3. COORDINATE EXACT LOCATION OF SPEAKERS, CAMERAS, AND LIGHTING WITH ARCHITECT PRIOR TO INSTALLATION.
 4. REFER TO CIVIL DRAWINGS FOR FINISH GRADE ELEVATIONS.
 5. REFER TO A3.25 FOR PRECAST TYPES
 6. REFER TO A3.25 FOR SUNSHADE TYPES
 7. FIRST FLOOR ELEVATION = 100' - 0" FINISH FLOOR ELEVATION OF 100' - 0" CORRESPONDS TO ELEVATION 96.50 ON THE CIVIL DRAWINGS

90% CONSTRUCTION DOCUMENTS

KEY PLAN NORTH ARROW



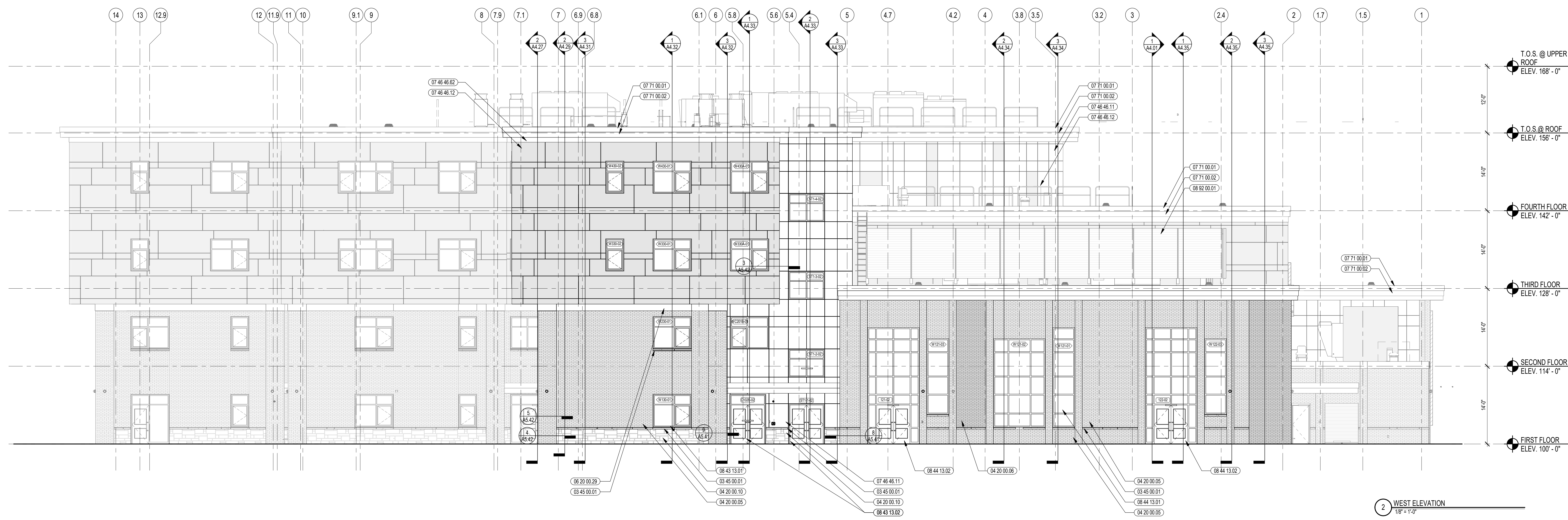
KEYPLAN



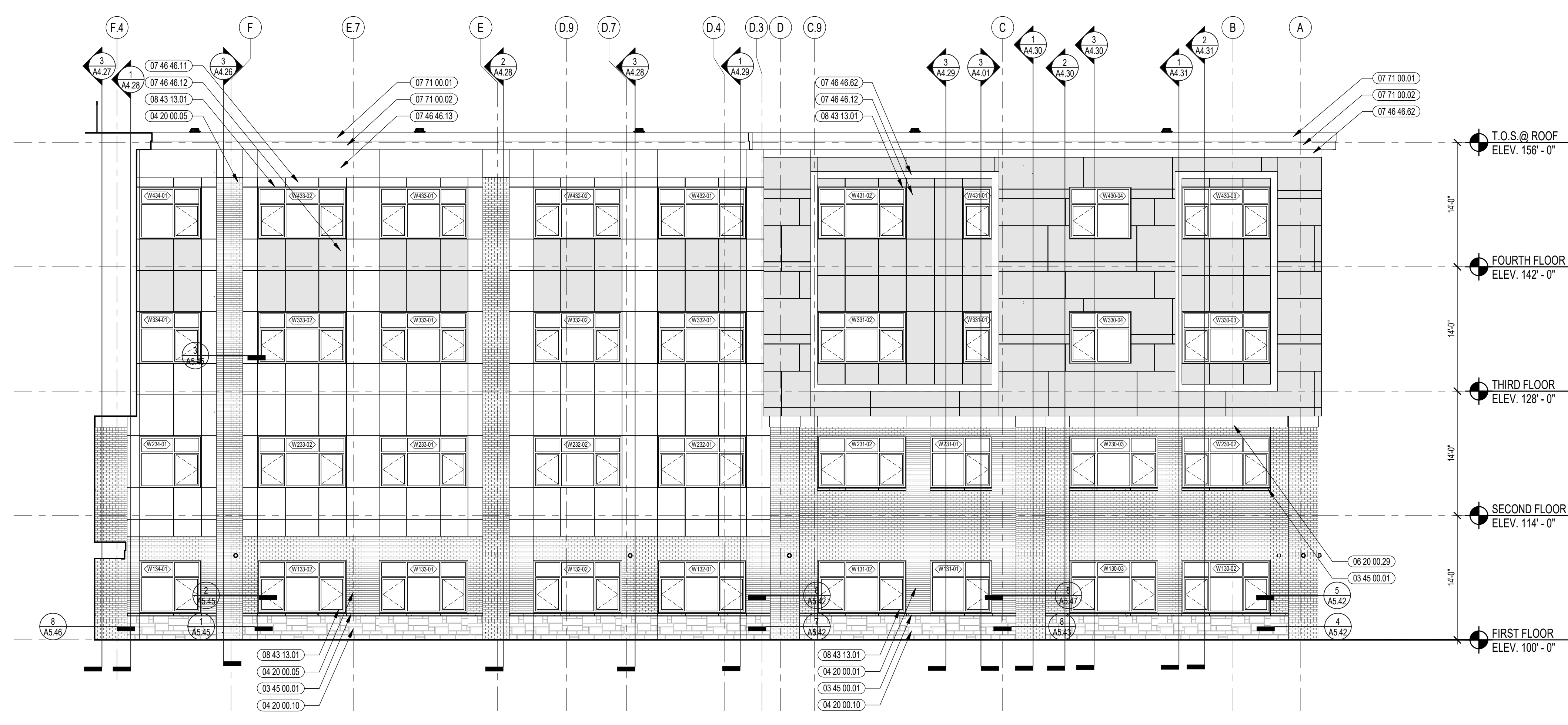
DRAWING NAME:

EXTERIOR ELEVATIONS

DRAWN BY: NGA / NSL
 REVIEWED BY: NSL / JPT
 SCALE: AS INDICATED | DRAWING NUMBER:
 JOB NO.: 2002.00
 DATE: JANUARY 27, 2023 **A3.04**



2 WEST ELEVATION
1/8" = 1'-0"



1 PARTIAL NORTH ELEVATION
1/8" = 1'-0"