



PHILIP O. COAKLEY MIDDLE SCHOOL  
1315 WASHINGTON STREET  
NORWOOD, MA 02062

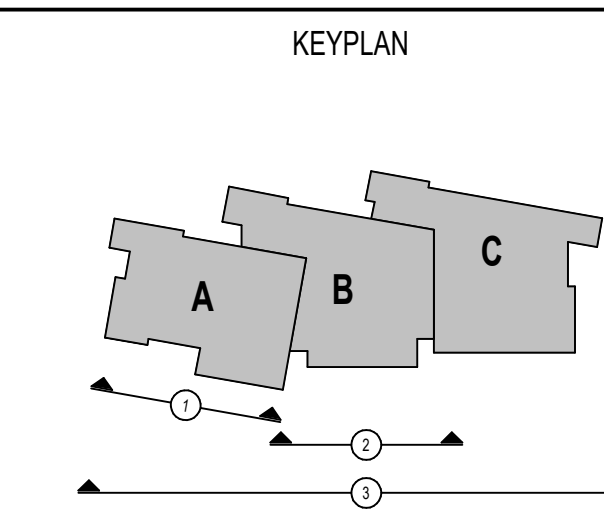
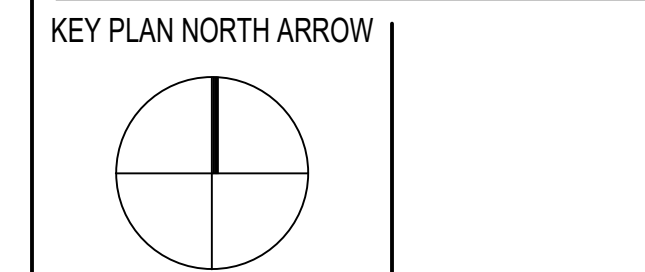
KEYNOTE LEGEND:

- 03 45 00.01 ARCHITECTURAL PRECAST CONCRETE UNIT
- 04 20 00.05 FACE BRICK - TYPE 1
- 04 20 00.06 FACE BRICK - TYPE 2
- 07 42 13.01 ALUMINUM COMPOSITE PANEL - COLOR 1
- 07 42 13.02 ALUMINUM COMPOSITE PANEL - COLOR 2
- 07 46 46.11 MINERAL FIBER CEMENT PANEL - COLOR 1
- 07 46 46.12 MINERAL FIBER CEMENT PANEL - COLOR 2
- 07 46 46.55 BEAD REVEAL TRIM
- 07 71 00.01 FACTORY FABRICATED FASCIA TRIM/ROOF EDGE - CUSTOM COLOR
- 07 71 00.02 EXPOSED ALUMINUM FINISH METAL - CUSTOM COLOR
- 08 43 13.01 ALUMINUM STOREFRONT FRAME
- 08 43 13.02 ALUMINUM ENTRANCE DOOR
- 08 44 13.01 ALUMINUM CURTAIN WALL FRAME
- 08 44 13.02 ALUMINUM ENTRANCE DOOR
- 10 14 00.11 EXTERIOR SIGNAGE - TYPE AS SCHEDULED

LEGEND	
METAL PANEL - COLOR 1	
METAL PANEL - COLOR 2	
FACE BRICK - COLOR 1	
FACE BRICK - COLOR 2	
SPLIT FACE CMU TYPE 1	
FIBER CEMENT PANEL COLOR 1	
FIBER CEMENT PANEL COLOR 2	

- GENERAL NOTES:**
1. REFER TO SHEET A3.01 FOR TYPICAL HORIZONTAL BOND BREAK IN VENEER BETWEEN CHANGES IN VENEER MATERIALS.
  2. REFER TO SHEET A3.31 FOR ADDITIONAL FIBER CEMENT PANEL INFORMATION AND DETAILS.
  3. COORDINATE EXACT LOCATION OF SPEAKERS, CAMERAS, AND LIGHTING WITH ARCHITECT PRIOR TO INSTALLATION.
  4. REFER TO CIVIL DRAWINGS FOR FINISH GRADE ELEVATIONS.
  5. REFER TO A3.35 FOR PRECAST TYPES
  6. REFER TO A3.45 FOR SUNSHADE TYPES
  7. FINISH FLOOR ELEVATION OF 100' - 0" CORRESPONDS TO ELEVATION 98.50 ON THE CIVIL DRAWINGS

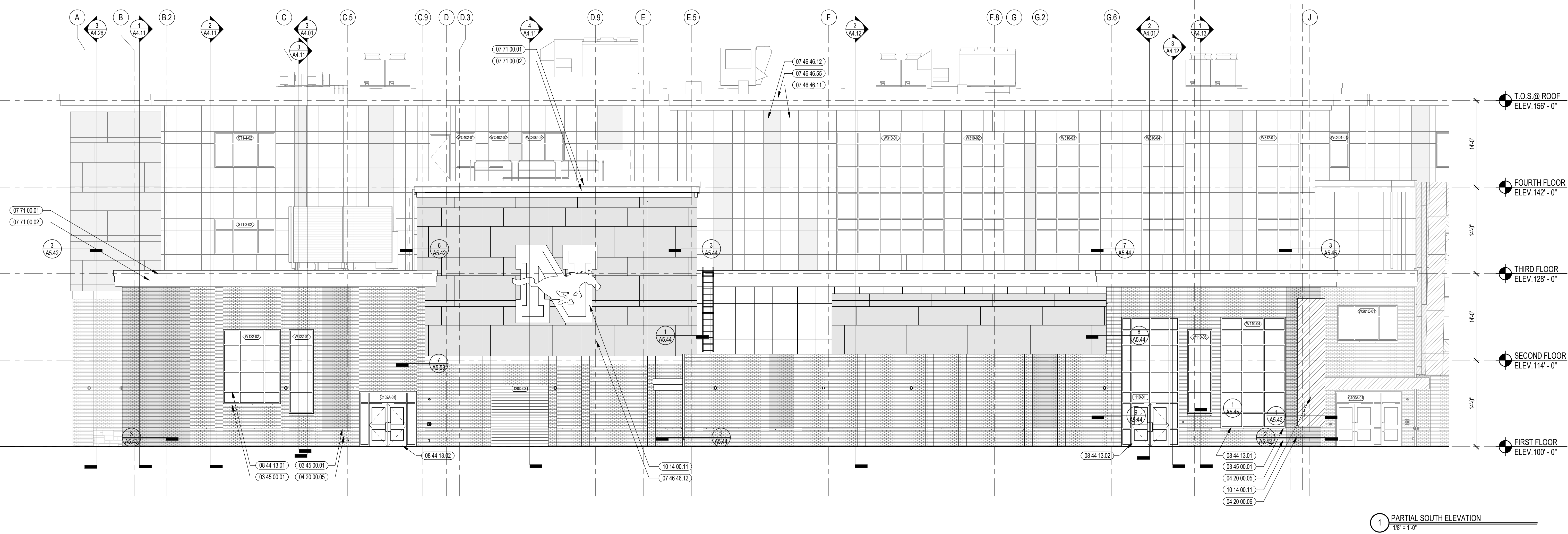
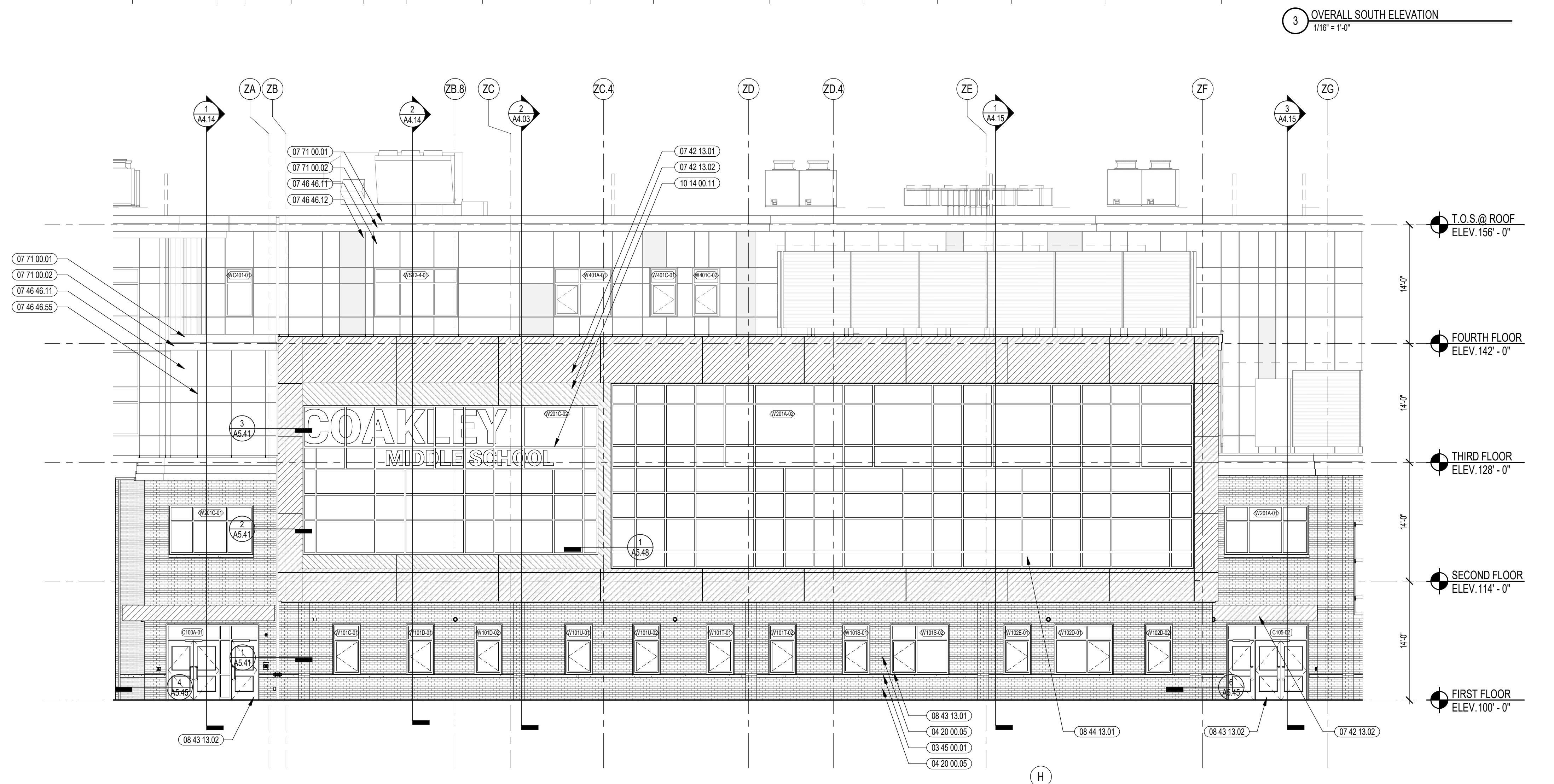
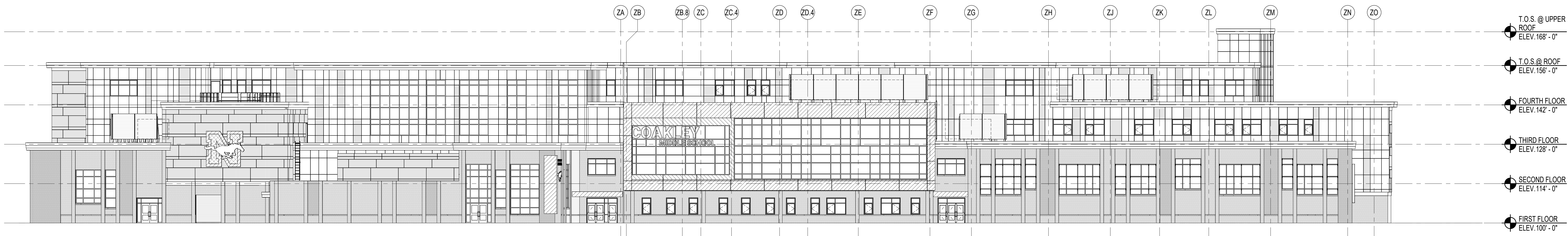
**60% CONSTRUCTION DOCUMENTS**



DRAWING NAME:

**EXTERIOR ELEVATIONS**

DRAWN BY: NGA / NSL  
REVIEWED BY: NSL / JPT  
SCALE: AS INDICATED | DRAWING NUMBER:  
JOB NO.: 2002.00  
DATE: NOVEMBER 04, 2022 **A3.01**



**KEYNOTE LEGEND:**

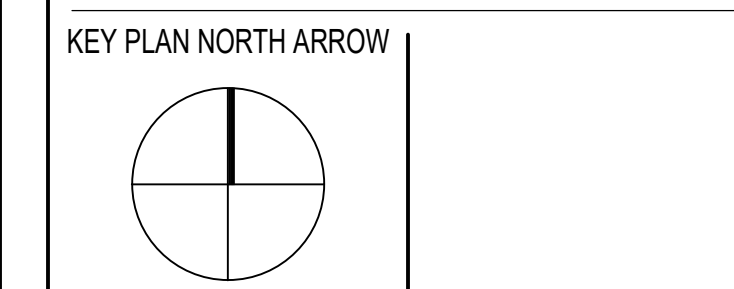
03 45 00.01	ARCHITECTURAL PRECAST CONCRETE UNIT
04 20 00.05	FACE BRICK - TYPE 1
04 20 00.06	FACE BRICK - TYPE 2
04 20 00.10	CMU BASE - SPLIT FACE CMU - REFERENCE DETAILS FOR TYPE AND DEPTH
05 20 00.29	PVC TRIM - SIZE AS NOTED
07 42 13.01	ALUMINUM COMPOSITE PANEL - COLOR 1
07 46 46.11	MINERAL FIBER CEMENT PANEL - COLOR 1
07 46 46.12	MINERAL FIBER CEMENT PANEL - COLOR 2
07 46 46.55	BEAD REVEAL TRIM
07 46 46.62	MINERAL FIBER CEMENT TRIM BOARD - 5/4 THICK - SIZE AS NOTED
07 71 00.01	FACTORY FABRICATED FASCIA TRIM/ROOF EDGE - CUSTOM COLOR
07 71 00.02	EXPOSED ALUMINUM FINISH METAL - CUSTOM COLOR
08 44 13.01	ALUMINUM CURTAIN WALL FRAME
08 44 13.02	ALUMINUM ENTRANCE DOOR
09 92 00.01	LOUVERED EQUIPMENT ENCLOSURE
10 14 00.11	EXTERIOR SIGNAGE - TYPE AS SCHEDULED

**LEGEND**

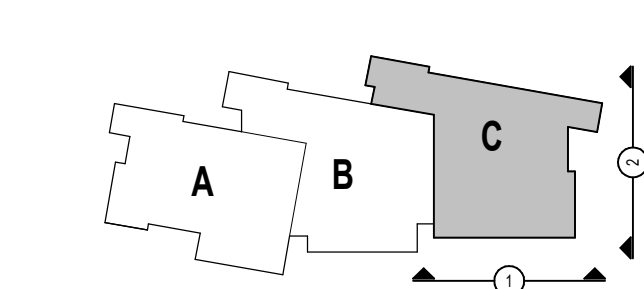
METAL PANEL - COLOR 1	[Pattern]
METAL PANEL - COLOR 2	[Pattern]
FACE BRICK - COLOR 1	[Pattern]
FACE BRICK - COLOR 2	[Pattern]
SPLIT FACE CMU TYPE 1	[Pattern]
FIBER CEMENT PANEL COLOR 1	[Pattern]
FIBER CEMENT PANEL COLOR 2	[Pattern]

- GENERAL NOTES:**
- REFER TO SHEET A3.01 FOR TYPICAL HORIZONTAL BOND BREAK IN VENEER BETWEEN CHANGES IN VENEER MATERIALS.
  - REFER TO SHEET A3.31 FOR ADDITIONAL FIBER CEMENT PANEL INFORMATION AND DETAILS.
  - COORDINATE EXACT LOCATION OF SPEAKERS, CAMERAS, AND LIGHTING WITH ARCHITECT PRIOR TO INSTALLATION.
  - REFER TO CIVIL DRAWINGS FOR FINISH GRADE ELEVATIONS.
  - REFER TO A3.35 FOR PRECAST TYPES.
  - REFER TO A3.45 FOR SUNSHADE TYPES.
  - FIRST FLOOR ELEVATION = 100' - 0" FINISH FLOOR ELEVATION OF 107' - 0" CORRESPONDS TO ELEVATION 96.50 ON THE CIVIL DRAWINGS.

**60% CONSTRUCTION DOCUMENTS**



KEY PLAN



DRAWING NAME:

**EXTERIOR ELEVATIONS**

DRAWN BY: NGA / NSL

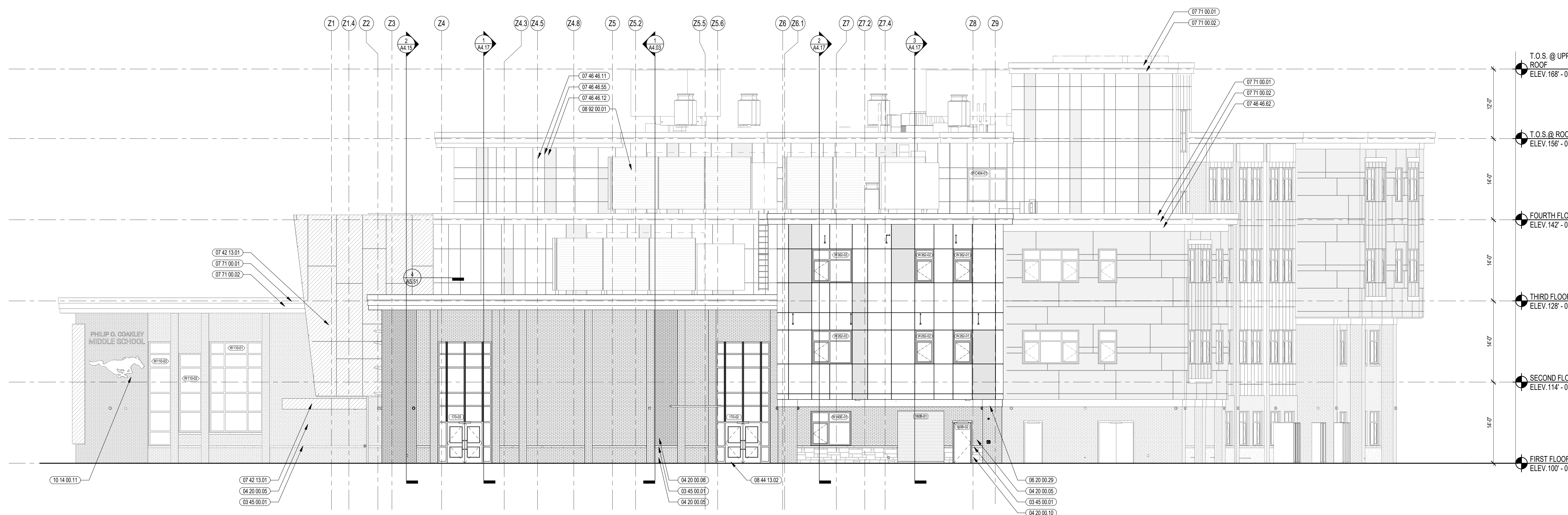
REVIEWED BY: NSL / JPT

SCALE: AS INDICATED | DRAWING NUMBER:

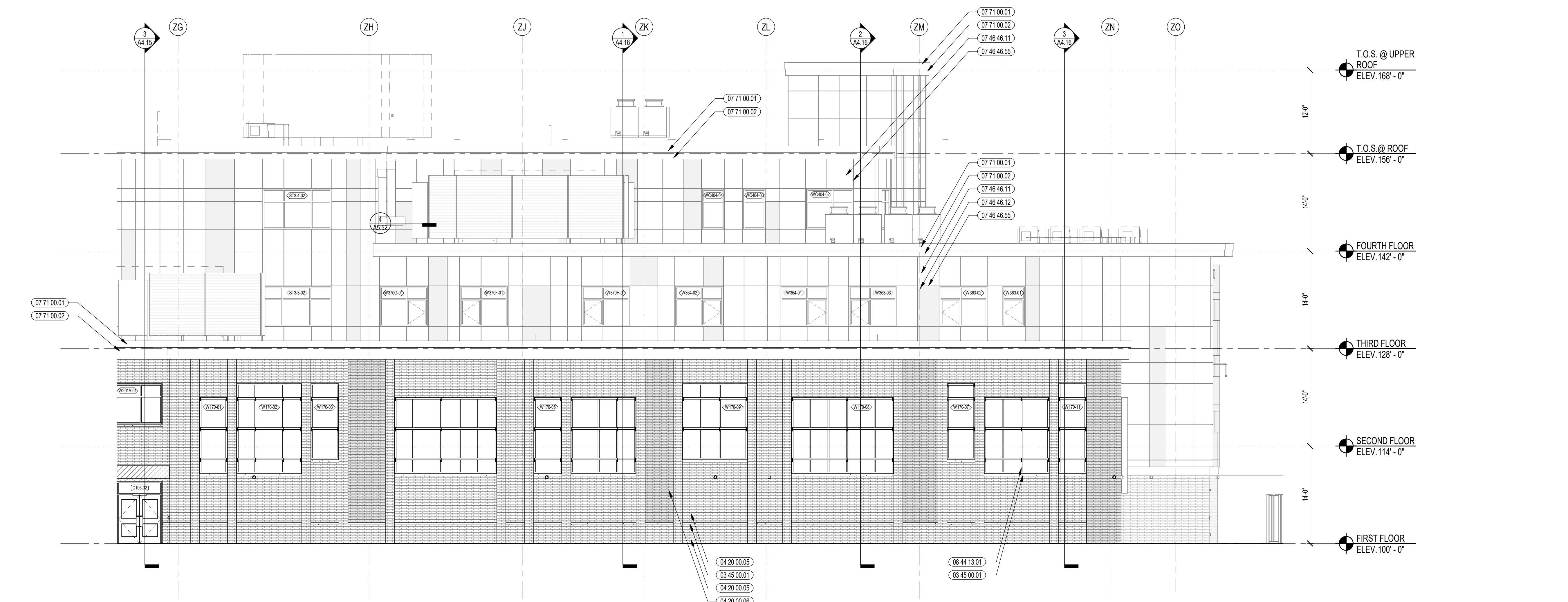
JOB NO.: 2002.00

DATE: NOVEMBER 04, 2022

**A3.02**



2 EAST ELEVATION  
1/8" = 1'-0"



1 PARTIAL SOUTH ELEVATION  
1/8" = 1'-0"





PHILIP O. COAKLEY MIDDLE SCHOOL  
1315 WASHINGTON STREET  
NORWOOD, MA 02062

**KEYNOTE LEGEND:**

03 45 00.01	ARCHITECTURAL PRECAST CONCRETE UNIT
04 20 00.05	FACE BRICK - TYPE 1
04 20 00.10	CMU BASE - SPLIT FACE CMU - REFERENCE DETAILS FOR TYPE AND DEPTH
06 20 00.29	PVC TRIM - SIZE AS NOTED
07 46 46.11	MINERAL FIBER CEMENT PANEL - COLOR 1
07 46 46.12	MINERAL FIBER CEMENT PANEL - COLOR 2
07 46 46.13	MINERAL FIBER CEMENT TRIM BOARD - 5/4 THICK - SIZE AS NOTED
07 46 46.62	FACTORY FABRICATED FASCIA TRIM/ROOF EDGE - CUSTOM COLOR
07 71 00.01	EXPOSED ALUMINUM FINISH METAL - CUSTOM COLOR
07 71 00.02	ALUMINUM STOREFRONT FRAME
08 43 13.01	ALUMINUM ENTRANCE DOOR

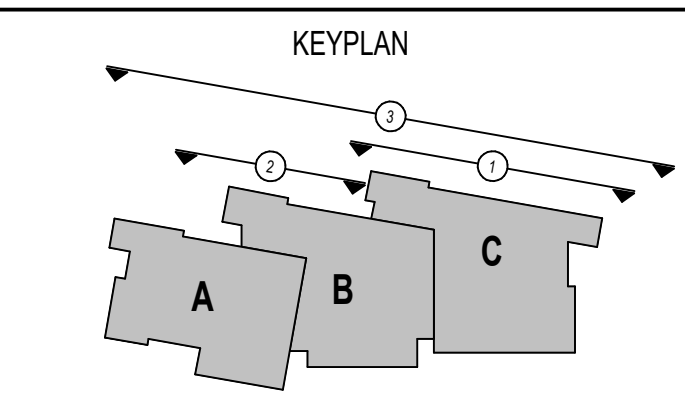
**LEGEND**

METAL PANEL - COLOR 1	[Pattern]
METAL PANEL - COLOR 2	[Pattern]
FACE BRICK - COLOR 1	[Pattern]
FACE BRICK - COLOR 2	[Pattern]
SPLIT FACE CMU TYPE 1	[Pattern]
FIBER CEMENT PANEL COLOR 1	[Pattern]
FIBER CEMENT PANEL COLOR 2	[Pattern]

- GENERAL NOTES:**
- REFER TO SHEET A3.01 FOR TYPICAL HORIZONTAL BOND BREAK IN VENEER BETWEEN CHANGES IN VENEER MATERIALS.
  - REFER TO SHEET A3.31 FOR ADDITIONAL FIBER CEMENT PANEL INFORMATION AND DETAILS.
  - COORDINATE EXACT LOCATION OF SPEAKERS, CAMERAS, AND LIGHTING WITH ARCHITECT PRIOR TO INSTALLATION.
  - REFER TO CIVIL DRAWINGS FOR FINISH GRADE ELEVATIONS.
  - REFER TO A3.35 FOR PRECAST TYPES.
  - REFER TO A3.45 FOR SUNSHADE TYPES.
  - FIRST FLOOR ELEVATION = 100'-0" FINISH FLOOR ELEVATION OF 100'-0" CORRESPONDS TO ELEVATION 96.50 ON THE CIVIL DRAWINGS

**60% CONSTRUCTION DOCUMENTS**

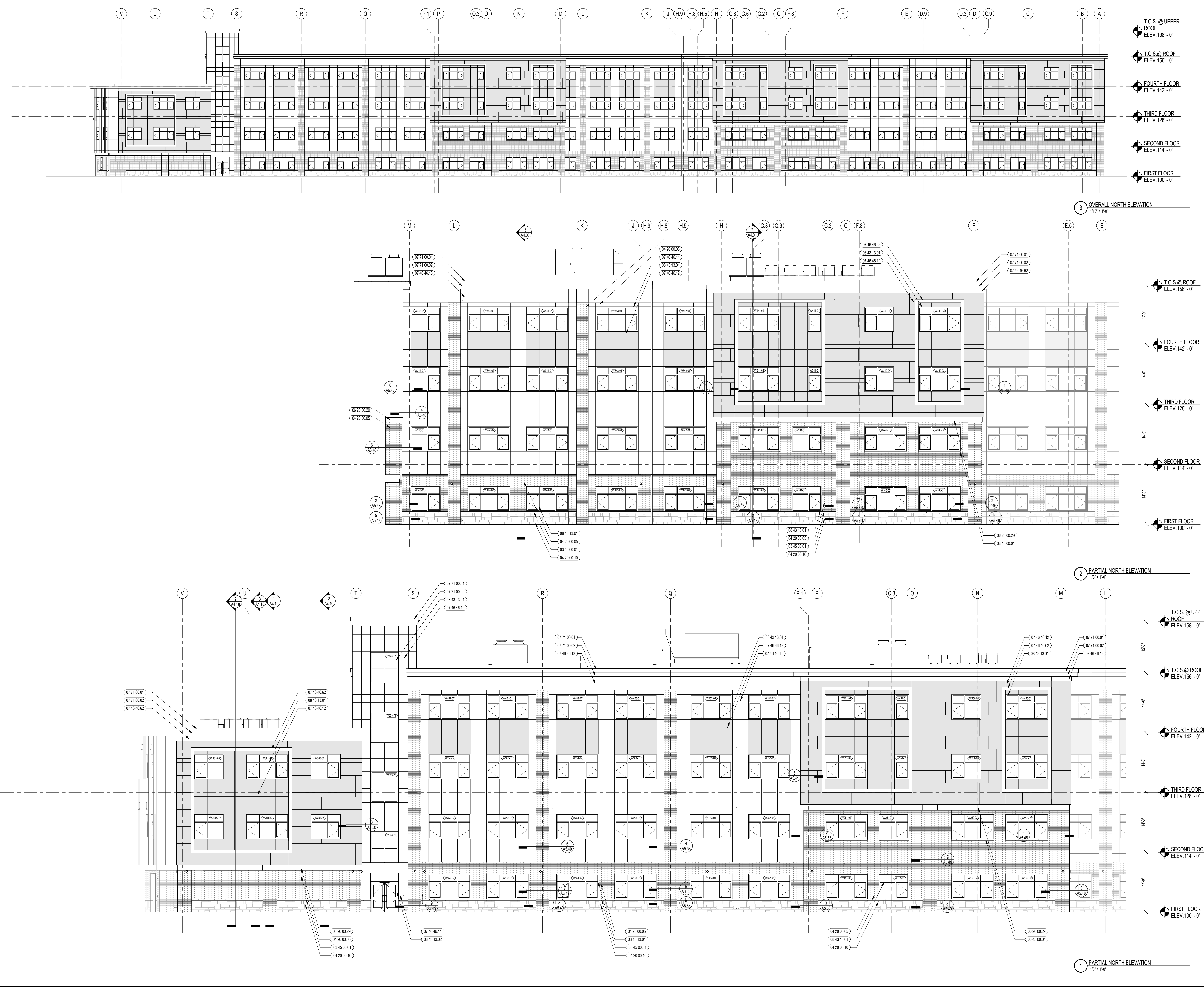
KEY PLAN NORTH ARROW



DRAWING NAME:  
**EXTERIOR ELEVATIONS**

DRAWN BY: NGA / NSL  
REVIEWED BY: NSL / JPT

SCALE: AS INDICATED | DRAWING NUMBER:  
JOB NO.: 2002.00  
DATE: NOVEMBER 04, 2022 **A3.03**





PHILIP O. COAKLEY MIDDLE SCHOOL  
1315 WASHINGTON STREET  
NORWOOD, MA 02062

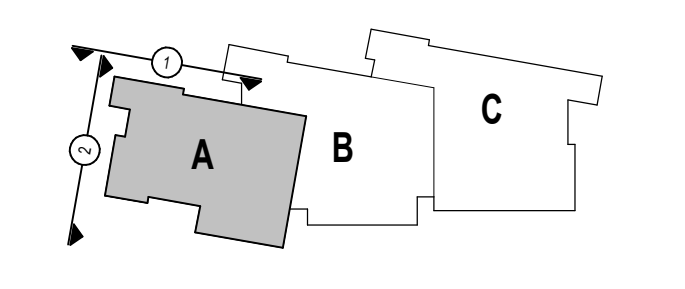
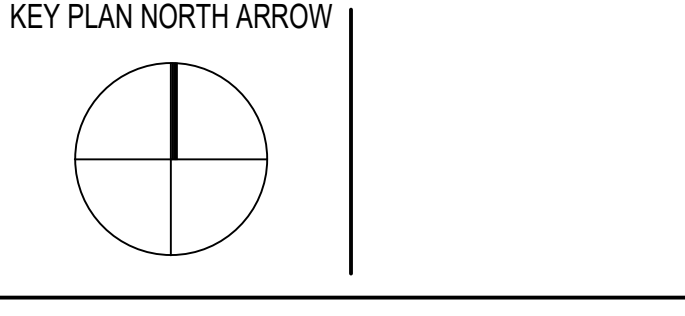
- KEYNOTE LEGEND:**
- 03 45 00.01 ARCHITECTURAL PRECAST CONCRETE UNIT
  - 04 20 00.01 FACE BRICK - REFERENCE ELEVATIONS FOR TYPE AND COURSING
  - 04 20 00.05 FACE BRICK - TYPE 1
  - 04 20 00.06 FACE BRICK - TYPE 2
  - 04 20 00.10 CMU BASE - SPLIT FACE CMU - REFERENCE DETAILS FOR TYPE AND DEPTH
  - 06 20 00.29 PVC TRIM - SIZE AS NOTED
  - 07 46 46.11 MINERAL FIBER CEMENT PANEL - COLOR 1
  - 07 46 46.12 MINERAL FIBER CEMENT PANEL - COLOR 2
  - 07 46 46.13 MINERAL FIBER CEMENT PANEL - COLOR 3
  - 07 46 46.82 MINERAL FIBER CEMENT TRIM BOARD - 5/4 THICK - SIZE AS NOTED
  - 07 71 00.01 FACTORY FABRICATED FASCIA TRIM/ROOF EDGE - CUSTOM COLOR
  - 07 71 00.02 EXPOSED ALUMINUM FINISH METAL - CUSTOM COLOR
  - 08 43 13.01 ALUMINUM STOREFRONT FRAME
  - 08 43 13.02 ALUMINUM ENTRANCE DOOR
  - 08 44 13.01 ALUMINUM CURTAIN WALL FRAME
  - 08 44 13.02 ALUMINUM ENTRANCE DOOR
  - 08 92 00.01 LOUVERED EQUIPMENT ENCLOSURE

**LEGEND**

METAL PANEL - COLOR 1	
METAL PANEL - COLOR 2	
FACE BRICK - COLOR 1	
FACE BRICK - COLOR 2	
SPLIT FACE CMU TYPE 1	
FIBER CEMENT PANEL COLOR 1	
FIBER CEMENT PANEL COLOR 2	

- GENERAL NOTES:**
1. REFER TO SHEET A3.01 FOR TYPICAL HORIZONTAL BOND BREAK IN VENEER BETWEEN CHANGES IN VENEER MATERIALS.
  2. REFER TO SHEET A3.31 FOR ADDITIONAL FIBER CEMENT PANEL INFORMATION AND DETAILS.
  3. COORDINATE EXACT LOCATION OF SPEAKERS, CAMERAS, AND LIGHTING WITH ARCHITECT PRIOR TO INSTALLATION.
  4. REFER TO CIVIL DRAWINGS FOR FINISH GRADE ELEVATIONS.
  5. REFER TO A3.35 FOR PRECAST TYPES
  6. REFER TO A3.45 FOR SUNSHADE TYPES
  7. FIRST FLOOR ELEVATION = 100' - 0" FINISH FLOOR ELEVATION OF 100' - 0" CORRESPONDS TO ELEVATION 96.50 ON THE CIVIL DRAWINGS

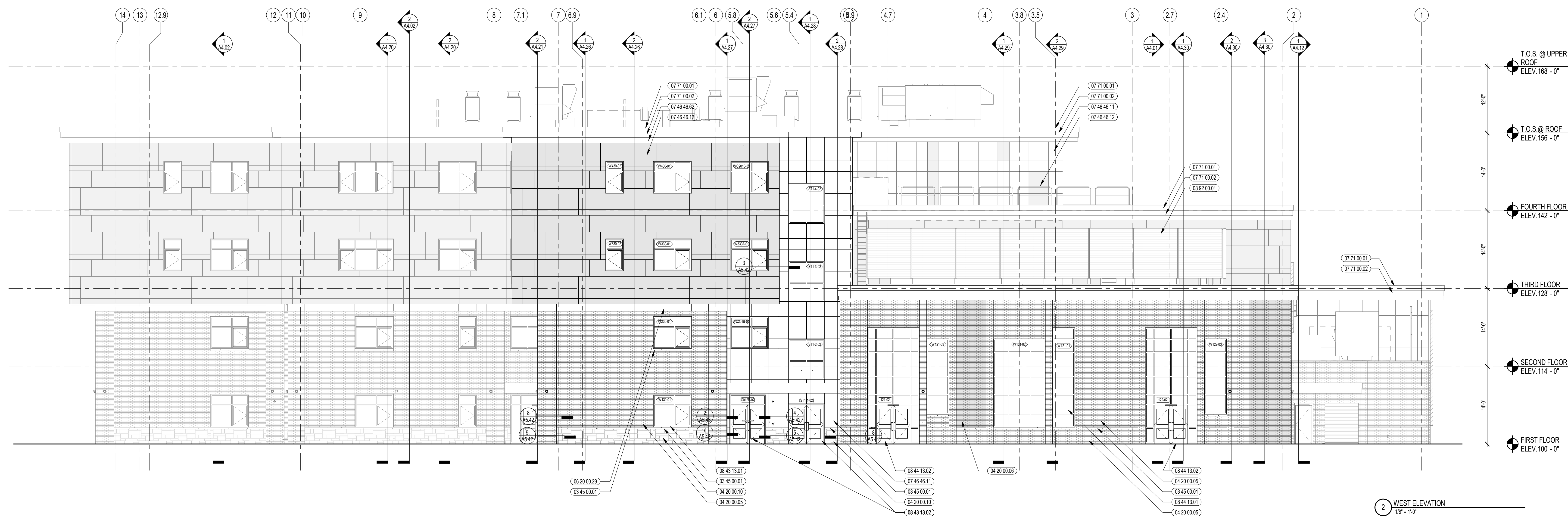
**60% CONSTRUCTION DOCUMENTS**



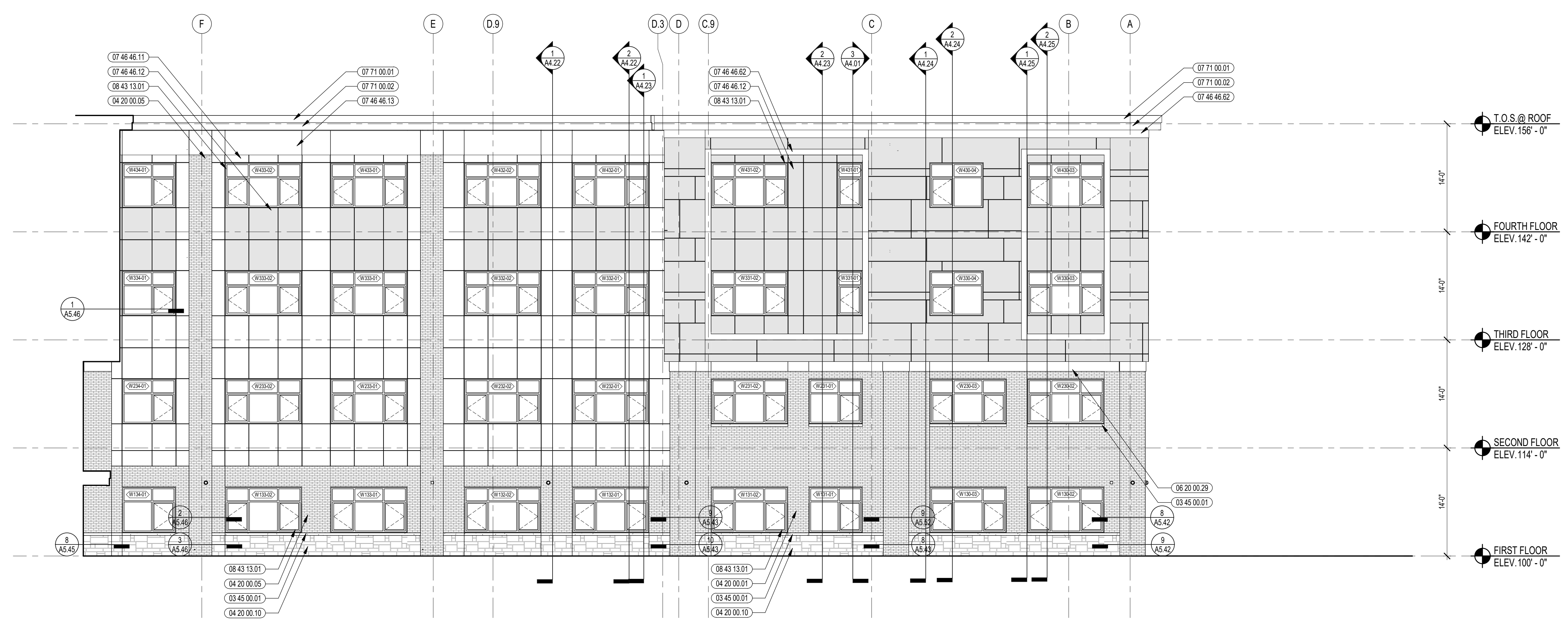
DRAWING NAME:  
**EXTERIOR ELEVATIONS**

DRAWN BY: NGA / NSL  
REVIEWED BY: NSL / JPT

SCALE: AS INDICATED | DRAWING NUMBER:  
JOB NO.: 2002.00  
DATE: NOVEMBER 04, 2022 **A3.04**



2 WEST ELEVATION  
1/8" = 1'-0"



1 PARTIAL NORTH ELEVATION  
1/8" = 1'-0"